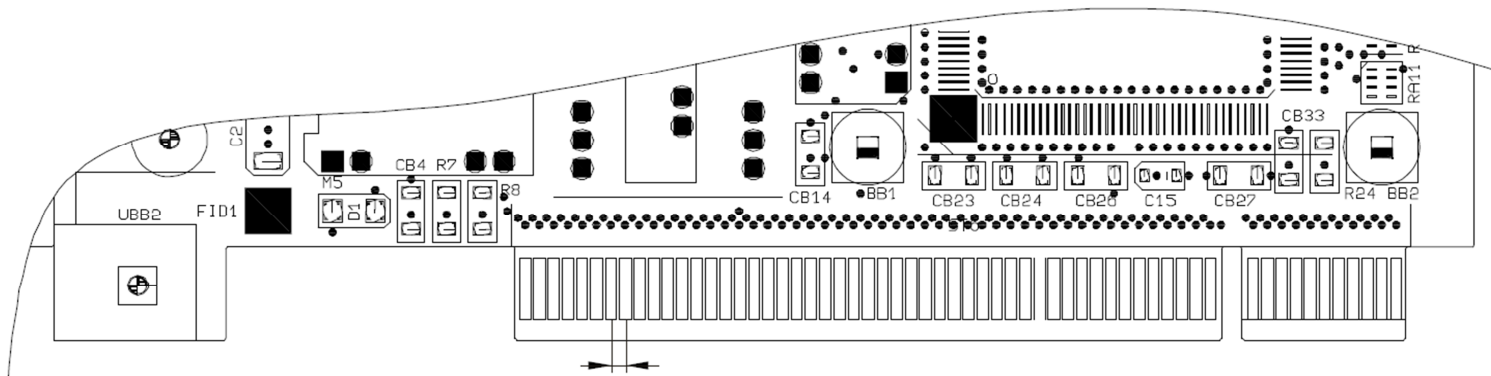


WEdirekt definition of gold connector

Connector contacts must in principle always be arranged in one line (no offset to the rear).

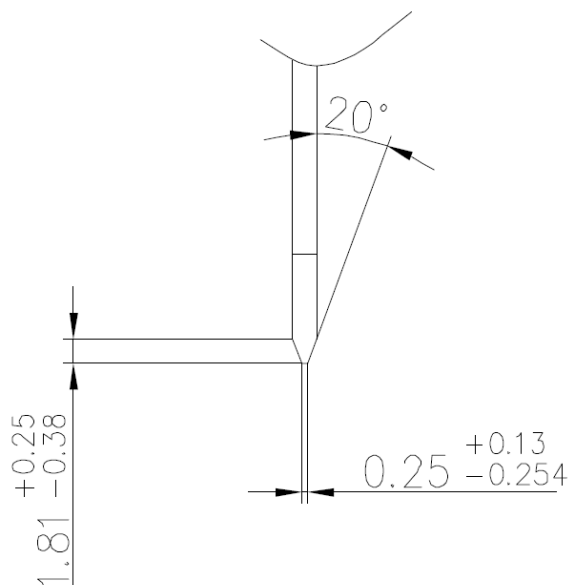
Possible variants:

1. PCI 20°

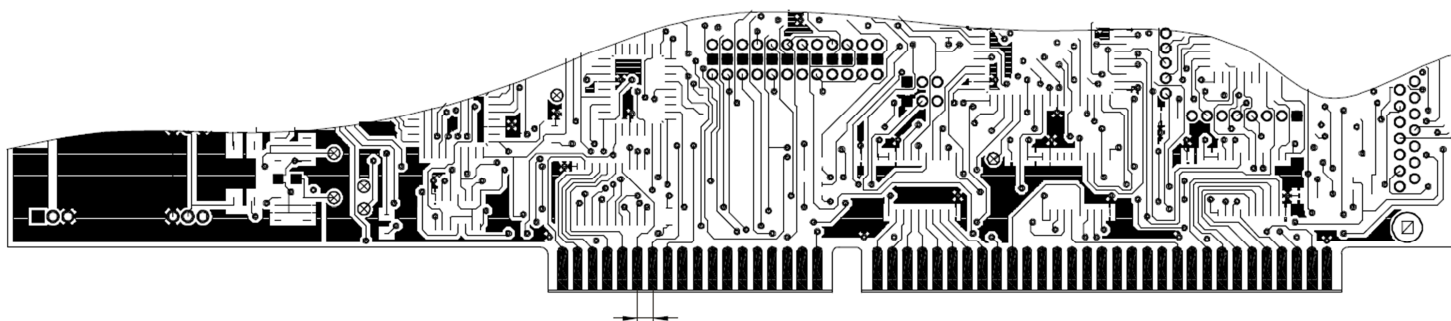


distance from one connector contact to the other: $\geq 1,27\text{mm}$

Detailed:

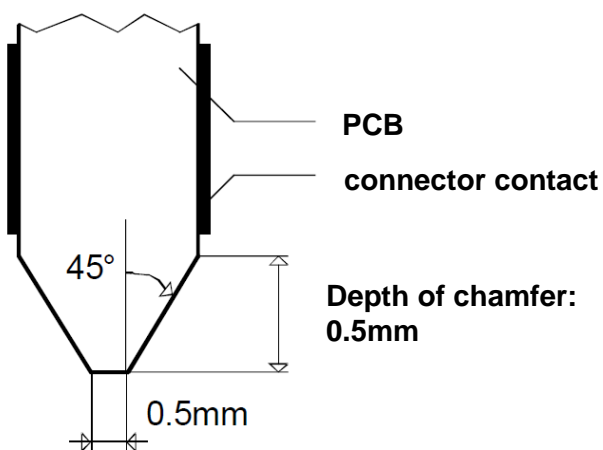


2. ISA 45°



distance from one connector contact to the other: $\geq 2,54\text{mm}$

Detailed:



→ Illustration in delivery panel

